

PM60

ALL MIGHTY RUGGED MOBILE COMPUTER

Optimize your workforce with maximum outdoor features

PM60 is perfectly designed for outside-4-wall applications with full VGA(480x640), daylight readable (600NIT) & wide viewing angle 3.5" TFT-LCD. Seamless screen will provide comfortable touch and drag with fingertips more than ever.

Maximize power and speed with latest micro processor

Adopting the latest Cortex A8 @ 1GHz processor from TI (Texas Instrument) and 512MB/1GB(RAM/ROM), PM60 will give you maximum power and speed for your field workforces to conduct any complicated job process in the field.

Extend your business with two Operating Systems

Now you can choose either Windows Embedded Handheld 6.5 or Android 4.2 Jellybean. Now, Windows Embedded CE 6.0 is available for non-3G model.

Enjoy fast barcode scanning and high resolution camera

You can select either a laser scanner or an imager scanner as built-in option. Laser scanner supports all standard 1D symbologies. The imager has laser aimer for easy aiming and can read all standard 1D/2D barcode symbologies and GS1 Databar. You can also have great benefit for reading poor-printed and damaged barcodes. Unbeatable 5.0 mega pixel camera provides high resolution picture and video to help you free from any possible disputes with customers due to damaged items at the site.



Industries

Retail
Field Services
Public Sector
Transport & Logistics
Hospitality

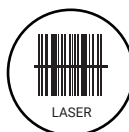
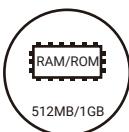
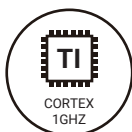
Accessories

Standard

AC/DC Power Adaptor
Standard Battery
Stylus Pen and Tether
USB Sync Cable
Handstrap
LCD Protection Film

Optional

Single Slot Cradle (opt. Ethernet)
4 Slot Battery Charger
4 Slot Cradle





PERFORMANCE CHARACTERISTICS

Main-Processor

TI - Cortex A8 Processor @ 1GHz

Operating System

Windows Embedded Handheld 6.5 Professional
Windows Embedded CE 6.0 Professional
Google Android 4.2.2 Jellybean

Memory and Storage

RAM 512MB
ROM (NAND Flash) 1GB
Micro-SD Micro-SD card slot up to 32GB SDHC

Sensor

Accelerometer
Ambient Light

PHYSICAL CHARACTERISTICS

Dimensions

With standard batt. 156.9mm L x 75.6mm W x 25.8mm D
6.1in L x 2.9in W x 1.1 in D

Weight

With standard batt. 340g / 11.9oz

Display

3.5" (480 x 640 pixel)
VGA TFT-LCD
Daylight readable 600NITs
Wide viewing angle,
Resistive touch

Power

Standard Battery 4,000mAh Li-ion (14.8Wh) rechargeable
IEEE 1725 Compliant

Keypad

Numeric (27 key) or QWERTY (45 Key)
with backlight

Audio Support

Supports VoIP
Built-in microphone and speaker
Receiver and headset jack (3.5mm)
Wireless Bluetooth
Headset support

Standard Communications

High speed USB 2.0 from
either cradle or USB sync cable

Notification

Front 2 x dual color LEDs for Power indication,
Warning indication & scan reading
Scan Alert Vibration

GLOBAL POSITIONING SYSTEM

GPS

12 channel integrated GPS: assisted via WAN carrier:
accuracy within 3m, Stand-alone GPS available

WIRELESS

Wireless WAN

UMTS 800, 900, 1900, 2100MHz
Frequencies

GSM/GPRS 850, 900, 1800, 1900MHz
Frequencies

Technology Class 3.9G HSPA+
UMTS

Max Speeds Uplink – 5.76 Mbps:
Downlink – 14.4 Mbps

Antenna Interna

Wireless LAN

Radio IEEE 802.11 a/b/g/n

Data Rates Up to 72.2 Mbps

Operating Channels 1 to 13 (2.4GHz & 5GHz)

Regulatory Compliance As per IEEE 802.11n

Security WEP / WPA / WPA2 and more

Authentication PEAP/MS-CHAPv2, EAP-TLS

Wireless PAN

Bluetooth Integrated Bluetooth Class II,
Ver. 2.1+EDR
Channels 0 to 78 (2402-2480MHz)
Data Rates 1, 2, 3Mbps

DATA CAPTURE

NFC (Near Field Communcation)

13.56MHz HF RFID & NFC
Supported TAG-ICs : MIFARE® 1k/4k/Plus,
MIFARE UltraLight, MIFARE UltraLight C,
MIFARE DESFire, MIFARE DESFire EV1,
ISO 14443 A & B

Camera

5.0 MP AF camera with LED Flash

Integrated Barcode Reader

1D Laser Scanner All 1D standard symbology & Postal code

2D Imager Scanner All 1D/2D standard symbology
including GS1 Databar

USER ENVIRONMENT

Operating Temperature -20°C to 55°C / -4°F to 140°F

Storage Temperature -25°C to 70°C / -40°F to 158°F

Humidity 95% Non-condensing

Drop MIL-STD 810G for 1.5m(5ft)

Rain / Dust Proof (Sealing) IP65

Tumble 500cycle (1,000hits) at 1m /3.3ft

Electrostatic Discharge ±15 kV air discharge
±8 kV contact discharge

REGULATORY APPROVALS
AND COMPLIANCE

Safety: EMC, UL, RF, Laser, LED approvals
Radio: FCC, CE, KCC Marks
Environmental: RoHS & WEEE compliant