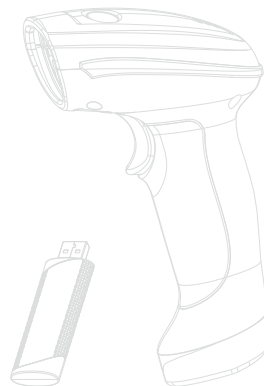


# Wireless Barcode Scanner

## User Guide



Warning: Do not scan the barcode in this manual arbitrarily.

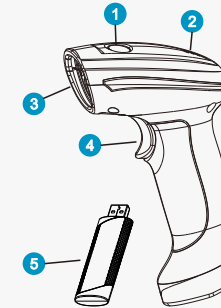
Ver 2.0  
US-EN

EN



### Description

- 1 LED Indicator
- 2 Sound Holes
- 3 Scan Window
- 4 Scan Button
- 5 Wireless Receiver



433MHz

1. Plug the receiver into the USB interface of the main device (Computer or Tablet PC which support USB OTG function ).
2. Scan the barcode ' Enable Pair ' in 20s.
3. When you hear a sound ' Beep ', it means paired successfully.
4. Start to use the device.

### Bluetooth™ 4.0 (Excluding the Receiver)

1. Enable the Bluetooth function of Bluetooth receiving device (Phone or TabletPC).
2. Long Press the scanning key for 10s after power on the scanner. At the moment ,a bluetooth keyboard device will appear in the BT device list of terminal device (Phone or PC).
3. Click the barcode scanner's name in the Bluetooth device list of phone or Tablet PC to start bluetooth pairing. When "Beep, beep" sound is heard, it means paired successful.
4. Start to use the device.





### Charging and cable transmission

**Wired Scanner:** When the scanner is connected with the main equipment via a cable, it is switched into wired transmission mode automatically. Meanwhile, the scanner is charged and the charging indicator is on. After the connection cable is removed, it is switched into wireless transmission status automatically.

## Indication Status Description

### Pairing Method:

- 1 Long press scanning key for 8s within 20s after you let receiver connected with terminal device. The receiver indicator flashes 5 times continuously and a "beep" sound is heard. The pairing is successful.
- 2 Scan the barcode 'Enable pair' within 20s after you let receiver connected with terminal device. The receiver indicator flashes 5 times continuously and a "beep" sound is heard. The pairing is successful.

Item	Condition	Status	Description
 LED Indicator	In working	Red	Power Indicator: The indicator is normal ON after the device is power on.
	In scanning	Blue	Decoding indication: The indicator flashes when the scanning is successful.
	In Bluetooth operation	Blue	Bluetooth Matching Indication: It flashes at pairing status and the indicator is normal ON after successful connection.
	In charging	Orange	Charging indicator: The indicator is normal ON in charging and OFF when charging is completed.
 Buzzer	Scan the barcode 【Enable Pair】	Bi-Bi, Bi, Bi, Bi, Bi	Pairing and connection with receiver is failed.
		Bi-Bi	Wireless pairing and connection is successful.
	Wireless function setting	Bi-Bi	Setting is successful. (except uploading and data statistics)
		Bi-Bi, Bi, Bi,	Reading is successful, but data uploading is failed.
	Off status	No operation for a while, beep~	Wireless scanner enters into sleep mode.
		After being ON, Bi~	Wireless scanner is has insufficient power. Prompt the device will power off automatically soon.

### Troubleshooting

Fault phenomenon	Cause	Troubleshooting
Barcode reading is successful but data cannot be uploaded. Meanwhile, there is no prompt sound.	Check the USB receiver	Re-plug in the receiver USB and PC. Check whether the connection is reliable. Observe whether the indicator of receiver accompanies with synchronous flashing.
	It may be in memory mode.	Scan barcode 'Real-time Uploading Mode' to set proper work mode.
	Baud rate setting error	Please set the baudrate as 57600.
Data information has unreadable code.	Baud rate setting error	Please set the baudrate as 57600.



Enable Pair

Plug in the receiver and scan 'Enable Pair' in 20s. After a prompt sound is heard and the receiver indicator is changed into flashing from normal ON, it means paired successfully. If there is no pairing in 20s, it shall re-plug in the receiver.

Scan the product barcode under Real-time Uploading Mode, and the data is transmitted to a computer in the real time.

(Default mode)



Real-time Uploading Mode



Memory Mode

Scan the barcode under memory mode, The data information will be saved in flash memory of scanners, if you want to upload these data information, please scan the barcode 'Upload Data'.

Scan barcode 'Upload Data' when barcode scanner saved some data information. The barcode information will be uploaded to a PC or phone which connected with the receiver.



Upload DATA



Delete All DATA

Delete all of data information were saved in the barcode scanner's flash memory.

Scan the barcode 'Data Total', it will send the total numbers of these data information saved in the barcode scanner's flash memory to Phone or PC.



DATA Total



20Sec

Auto sleep time



10 Min



Never

When there is no operation, the scanner will delay for a while and enter into sleep mode to save power. Scan related configuration barcode to set delay time (the default time is 20s).