





# TOUGHBOOK G2

## EVOLVED 2 ADAPT

The TOUGHBOOK G2 is the next generation rugged device for mobile workforces. It offers all the benefits of the latest technology, while maintaining important access to legacy systems. All of this, wrapped up in a more flexible, secure and ultimately even more useable device. An evolution of the best-selling Panasonic Toughbook G1 tablet and 20 detachable, this latest tablet is powered by the 10th Generation Intel® Core™ processor, delivering incredible performance, and is shipping with Windows 10 Pro. It also has a rich set of business interfaces with additional customizable options to meet a worker's needs. With its long battery life and outdoor viewing, glove-enabled touchscreen, it's a versatile yet tough technology companion for mobile workers.

- Intel® Core™ i5-10310U vPro™ Processor
- Windows 10 Pro / Free Upgrade to Windows 11\* (when available, see below)
- Intel® UHD Graphics
- Next generation IPSa outdoor display technology
- 10.1" high brightness WUXGA (1920x1200) display (up to 1.000cd/m<sup>2</sup>)
- Capacitive 10 finger multi-touchscreen + digitizer
- 180 cm drop resistant\*\*
- Water and dust resistant (IP65)\*\*
- Up to 12 hours battery life
- User exchangeable battery
- Optional Hot swap function
- Flexible configuration port (Serial, LAN, USB 2.0 or Thermal by FLIR, Barcode Reader)
- Rear expansion area (Smart Card Reader, HF-RFID)
- Lightweight design - weights approx. 1,19kg

\* The Windows 11 upgrade will be delivered to qualifying devices late 2021 into 2022. Timing will vary by device. Certain features require specific hardware (see aka.ms/windows11-spec).

\*\* Test by an independent third-party lab following MILSTD810H and IP65 will be done 2H 2021

*All technical specifications are subject to change without notice.*

# TOUGHBOOK G2 ACCESSORY ECOSYSTEM



All accessories in this guide are fully tested and certified in the Panasonic factory by Panasonic engineers

## DESKTOP DOCKING SOLUTIONS

### TOUGHBOOK G2 Desktop Cradle

Size: t.b.a.

Weight: t.b.a.

Part Nos:

- FZ-VEBG21U x2 HDMI 2.0 can be used simultaneously.



### TOUGHBOOK G1 Desktop Cradle

Size: 31.0 x 23.0 x 17.2 cm

Weight: 1.5 kg

Part Nos:

- FZ-VEBG11AU HDMI and VGA can be used simultaneously.

Compatible with TOUGHBOOK G2 Tablet



### TOUGHBOOK 20 Desktop Port Replicator

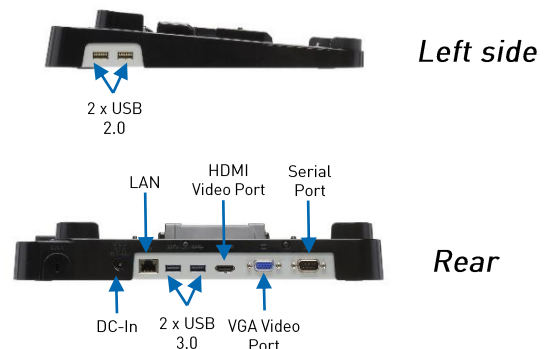
With full port replication.

Size: 315mm x 270mm x 50mm

Weight: 1.6 kg

Part No: CF-VEB201U

Compatible with TOUGHBOOK G2 Tablet + Keyboard



All technical specifications are subject to change without notice.



## TABLET VEHICLE DOCKING SOLUTIONS

### TOUGHBOOK G1/G2 Standard Vehicle Dock (Gamber Johnson)

Ports:

- Serial; VGA; HDMI; 2 x USB 3.0; LAN; 16V DC-in
- Option dual antenna pass-through
- VESA 75 mounting pattern
- Non-electronic versions available

Size: 285 x 251 x 99 mm

Weight: 0.91 kg

Part Nos (Docks with electronics):

- PCPE-GJG1V01 Keyed Alike without antenna pass-through
- PCPE-GJG1V02 Keyed Alike with antenna pass-through

Part Nos (Docks without electronics):

- PCPE-GJG1V05 Keyed Alike



### TOUGHBOOK G1/G2 Vehicle Dock (Havis)

Ports:

- Serial; VGA; HDMI; 2 x USB 3.0; LAN; 16V DC-in
- Option dual antenna pass-through
- VESA 75 mounting pattern

Size: 255 x 289 x 111 mm / 10.0" x 11.4" x 4.4"

Weight: 1.23 kg / 2.7 lb

Part Nos:

- PCPE-HAVG103 Keyed Alike without antenna pass-through
- PCPE-HAVG104 Keyed alike with antenna pass-through



All technical specifications are subject to change without notice.

## NOTEBOOK VEHICLE DOCKING SOLUTIONS

### TOUGHBOOK 20/G2 Notebook Dock (Havis)

Full port replication:

- 2 x USB 3.0; 1 x LAN; 1 x Serial; 1 x HDMI; 1 x VGA
- Optional dual antenna pass-through
- 16V DC-in

Size: 635 x 280 x 244 mm

Weight: 1.95 kg

Part No:

- PCPE-HAV2007 Without pass-through, keyed alike
- PCPE-HAV2008 With dual pass-through, keyed alike

*Only compatible with TOUGHBOOK G2 when used with keyboard accessory*



### TOUGHBOOK 20/G2 Notebook Vehicle Dock (Gamber-Johnson)

Ruggedised vehicle dock with full port replication and optional dual antenna pass-through. Non-electronic version also available.

Full port replication:

- 2 x USB 3.0; 1 x LAN; 1 x Serial; 1 x HDMI; 1 x VGA
- Optional dual antenna pass-through
- 16V DC-in

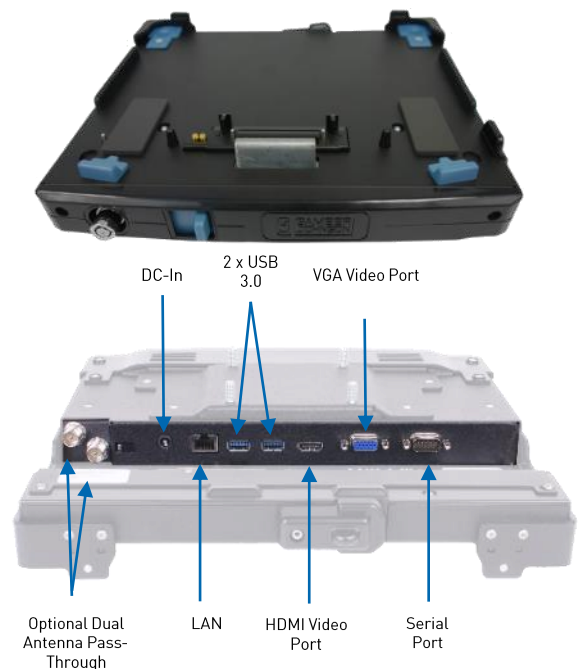
Size: 307 x 295 x 65 mm

Weight: 2.3 kg

Part Nos:

- PCPE-GJ20V07 No RF, keyed alike
- PCPE-GJ20V08 Dual RF, keyed alike

*Only compatible with TOUGHBOOK G2 when used with keyboard accessory*



*All technical specifications are subject to change without notice.*

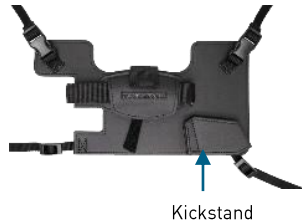
## CARRYING SOLUTIONS

### TOUGHBOOK G2 Rotating Hand Strap

Size: 243 x 127 x 15.5 mm

Weight: 0.135 kg

Part no: FZ-VSTG21U



### Toughmate Rotating Hand Strap

Size: 250 x 203 x 20 mm

Weight: 0.2 kg

Part no: PCPE-INFG2H1



### TOUGHBOOK G2 Always On Case

Size: 325 x 240 x 20 mm

Weight: 0.22 kg

Part no: PCPE-INFG2A0



### Toughmate Elastic X-Strap

Size: 178 x 9.5 x 10mm

Weight: 27.2g

Part No: PCPE-INFA3XS



*All technical specifications are subject to change without notice.*

## PRODUCTIVITY SOLUTIONS

### TOUGHBOOK G2 Emissive IP65 Backlit Keyboard

Ports:

- x1 USB 3.0 Type A
- x1 USB 3.0 Type c

Size: 287 x 240 x 56.1 mm

Weight: 910 g

Part no: FZ-VEKG21L\*



### TOUGHBOOK G2 Smart Card Reader

(For rear expansion area)

Size: 111 x 75 x 15.4 mm

Weight: 80 g

Part no: FZ-VSCG211U



### TOUGHBOOK G2 HF-RFID Reader

(For rear expansion area)

Size: 110 x 75 x 15.0 mm

Weight: 85 g

Part no: FZ-VRFG211U



### TOUGHBOOK G2 IP55 DIGITISER PEN

Size: 117.5mm x  $\Phi$ 9.0

Weight: 6.2 g

Part no: FZ-VNP026U



*All technical specifications are subject to change without notice.*



## PRODUCTIVITY SOLUTIONS

**TOUGHBOOK G2  
Barcode Reader**

(For configuration port)

Part no: FZ-VBRG211U



**TOUGHBOOK G2  
Thermal Camera**

(For configuration port)

Part no: FZ-VTSG211U



**TOUGHBOOK G2  
Gigabit LAN**

(For configuration port)

Part no: FZ-VLNG211U



**TOUGHBOOK G2  
USB 2.0 Type A**

(For configuration port)

Part no: FZ-VUBG211U



**TOUGHBOOK G2  
Native Serial**

(For configuration port)

Part no: FZ-VSRG211U

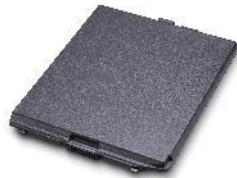


*All technical specifications are subject to change without notice.*

## POWER MANAGEMENT SOLUTIONS

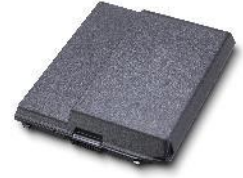
### Standard 4.360 mAh Battery Pack

Part No: FZ-VZSU1TU  
*For G2 Standard Model*



### Long-life 6.300 mAh Battery Pack

Part No: FZ-VZSU1UU  
*For G2 Standard Model*



### Long-life 6.800 mAh Battery Pack

Part No: FZ-VZSU1VU  
*For G2 Quick Release-SSD Model*

### AC Power Supply

Part No.: CF-AA5713A2\*  
E/G/T/D

\*E: UK; G: Continental; T: Italian; D: Swiss



### Car Charger 120 Watt, 12-32Vdc input

120 Watt, 12-32Vdc input  
“\*\*Should not be used to directly power the device. Use only with vehicle dock.\*\*”

Part No: CF-LND1224A



### Car Charger 120 Watt, 22-32VDC MIL-STD

“\*\*Should not be used to directly power the device. Use only with a vehicle dock.\*\*”

Part No: PCPE-LND3676



### External 4-bay Battery Charger

Part No: FZ-VCBG21\*  
E/G/T/D

\*E: UK; G: Continental; T: Italian; D: Swiss



All technical specifications are subject to change without notice.

## SECURITY AND PROTECTION SOLUTIONS

### Kensington Lock

Part No: PCPE-KENLOK1



### Protective Film for LCD

Replacement for protective film pre-installed on TOUGHBOOK

Part No: FZ-VPF38U



### Protective Film for LCD

Tempered glass for Panasonic FZ-G2

Part No: PCPE-INFG2TG1



### Privacy Screen for LCD

Privacy screen for Panasonic FZ-G2

Part No: PCPE-INFG2PF1



### LCD Screen Cleaning Cloth

Part No: CF-VNC002U

MOQ: 10 pcs



## MOBILE PRINT SOLUTIONS

### PJ7 Series A4 Mobile Printers

Perfectly dimensioned for your briefcase or computer bag, PJ7 series of compact, direct thermal printers can also be easily mounted in your vehicle. Take it out on the road and make sure your clients and customers receive those all-important documents in an instant. Available with 300 dpi print resolution, and with USB, Bluetooth or Wi-Fi.

Part No.: PCPE-BRPJ763  
PCPE-BRPJ773

PJ763 A4 mobile printer, 300 dpi with USB & Bluetooth  
PJ773 A4 mobile printer, 300 dpi with USB, Wi-Fi and AirPrint



*All technical specifications are subject to change without notice.*

## PRODUCTIVITY SOLUTIONS

### Compact Wearable Barcode Scanner

Part Nos:

- PCPE-PGLSCN1 – Standard Range
- PCPE-PGLSCN2 – Mid Range



### Barcode Scanner Charging Cradle

With International plugs

Part No: PCPE-PGLCHR3



### Index Trigger Wrap - 3 Pcs. Pack

Part Nos:

- PCPE-PGLITSL - Left Hand, Size Small
- PCPE-PGLITML - Left Hand, Size Medium
- PCPE-PGLITLL - Left Hand, Size Large
- PCPE-PGLITSR - Right Hand, Size Small
- PCPE-PGLITMR - Right Hand, Size Medium
- PCPE-PGLITLR - Right Hand, Size Large



### Bluetooth Headset

Part No: PCPE-MODBTH1



### Headset Battery Charger – 10 bay

Part No: PCPE-MOD10BC



### Replaceable Batteries – 25 pack

Part No: PCPE-MODBAT1



Contact for consumables – ear pads and  
microphone windscreen

All technical specifications are subject to change without notice.

## PROFESSIONAL SERVICES

### Custom BIOS Services

Part No: PCPE-PSBIO5G

### Autopilot Enrolment

Part No: PCPE-PSAUTOP

### SIM Installation

Part No: PCPE-PSSIMIN

### Information Management Bundle

IMEI, MAC, SIM, ASSET, Hardware Hash reporting.

Part No: PCPE-PSATAGB

### Solution Packaging

Up to 10 items packaged together in a box.

Does not include custom designed case.

Part No: PCPE-PSSPACK

### Custom Imaging

Part Nos:

- PCPE-PS20GIM - Image deployment per device (MOQ 30)
- Custom Image Creation - Price on request.

### Customer Branding

Logo badge on device casing or bezel.

Part No: PCPE-PSLOGOB

### Asset Tagging

Standard, using CPE label set.

Part No: PCPE-PSATAG1

### Custom Logistics

Part No: PCPE-PSCDL01

Price on Request.

*All technical specifications are subject to change without notice.*



## LIFECYCLE SUPPORT SOLUTIONS

### Extended Warranty

Panasonic's Extended Warranty provides an additional two years of warranty, helping you to minimise repair costs and maximise the life cycle of your Toughbook or TOUGHBOOK.

Part No.: FZ-LESPEW\* \*4 / 5

### Accidental Damage Warranty

Panasonic's Accidental Damage Warranty provides protection against any eventuality out in the field for up to 5 years, providing you and your workforce with complete peace of mind.

Part No.: FZ-LESPAD\* \*3 / 4 / 5 (4 & 5 year options include Extended Warranty)

### Smart Battery Warranty

Smart Service Lite battery analytics, powered by B2M, monitor device battery health in real-time. Smart Service Lite will alert you when batteries deployed in the field reach a low capacity level so a replacement battery can be sent out in advance.

Part No.: CF-LESPBASS\* \*3 / 4 / 5



*All technical specifications are subject to change without notice.*

## TOUGHBOOK SMART ESSENTIALS

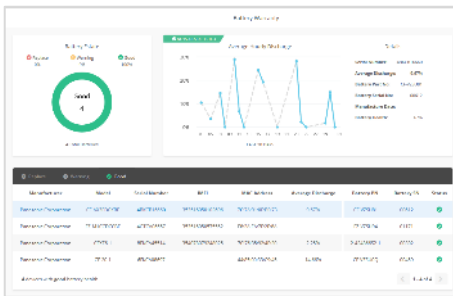
Get visibility and take control.

TOUGHBOOK Smart Essentials is a suite of Enterprise Mobility Intelligence tools, providing real-time insight into mobile device and battery health, enabling customers to proactively find and fix enterprise mobility issues.



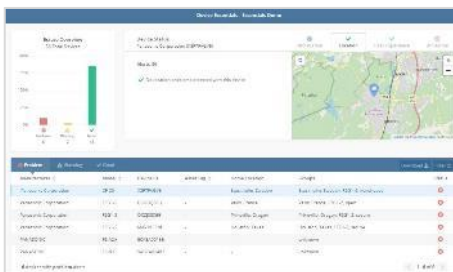
### Smart Service

Real time analytics, powered by B2M Solutions, showing the health and performance of your estate of mobile devices, focussing on areas such as battery life, data usage, disruptions and connectivity. Enables the user to recognise patterns of usage and potentially pre-empt issues before they arise.



### Smart Battery Monitor

An additional “Smart” module that monitors battery usage and health in detail, focusing on battery serial numbers, the software allows the customer to track, identify and replace batteries before they impact productivity. With dashboard access and alerts.



### Smart Device Monitor

An additional “Smart” module that monitors device usage in more detail. Dashboard access provides information such as device location; user experience, including drop detection on Android devices and also enables alerts and geofences to be set up.

TOUGHBOOK Smart Essentials can be purchased as a bundle, including all 3 modules detailed above as well as APIs to be able to pull the data into other business intelligence analysis tools:

- CF-LESPSESS1 1 year Smart Essentials Bundle
- CF-LESPSESS3 3 year Smart Essentials Bundle
- CF-LESPSESS5 5 year Smart Essentials Bundle

Alternatively, Battery Monitor and Device Monitor modules can be bought separately:

- CF-LESPBAEE1 1 year Smart Battery Monitor software licence
- CF-LESPBAEE3 3 year Smart Battery Monitor software licence
- CF-LESPBAEE5 5 year Smart Battery Monitor software licence
- CF-LESPDAEE1 1 year Smart Device Monitor software licence
- CF-LESPDAEE3 3 year Smart Device Monitor software licence
- CF-LESPDAEE5 5 year Smart Device Monitor software licence

All technical specifications are subject to change without notice.

## SOFTWARE SOLUTIONS – PREMIER PARTNERS



### Absolute Data and Device Security

Patented technology to centrally secure TOUGHBOOK devices for unrivalled endpoint security and data risk management.

*Part numbers available upon request.*

Website: <https://www.absolute.com/partners/oem/panasonic/>



### NetMotion Mobility

More than just a VPN, "Mobility" Mobile Performance Management software can dynamically maintain access to applications through changing network conditions, allowing mobile workers to remain productive anywhere their work takes them. Diagnostics option also available.

*Part numbers available upon request.*

Website: <https://www.netmotionsoftware.com/products/mobility>



### SOTI MobiControl

MobiControl is an Enterprise Mobility Management (EMM) solution with enhanced EMM features like application management, content management, location services and remote help.

*Part numbers available upon request.*

Website: <https://www.soti.net/products/soti-mobicontrol/>



### Sygic

Sygic Professional GPS Navigation works offline and features truck specific routing, itinerary with time windows and over 60 APIs for development with Android and Windows based apps.

*Part numbers available upon request.*

Website: <https://www.sygic.com/enterprise/professional-gps-navigation-sdk>

For more info on these software solutions, please refer to the co-branded data sheet [here](#).

## SOFTWARE SOLUTIONS – CERTIFIED PARTNERS



### StayLinked

StayLinked's SmartTE software provides a cost-effective way to take advantage of touchscreen devices with Terminal Emulation by transforming traditional "green screen" application screens into easy-to-use, graphical screens with no changes to the underlying enterprise applications.

For more information or to request a demo, visit:  
<https://www.staylinked.com/panasonic>



### Loqus

Loqus Fleet Ltd specialises in the provision of end-to-end Transport management systems providing organisations with the necessary tools to help them Plan, Execute and Monitor & Control work orders from initial order taking down to the last mile. Headquartered in Malta, the group employs a passionate team of high calibre software engineers supported by an experienced management team

Visit website: <http://openfleet.loqusgroup.com/>



### Acronis

Acronis sets the standard for cyber protection and hybrid cloud storage through its innovative backup, anti-ransomware, disaster recovery, storage, and enterprise file sync and share solutions. Enhanced by its award-winning AI-based active protection technology, blockchain-based authentication and unique hybrid-cloud architecture, Acronis protects all data in any environment – including physical, virtual, cloud, mobile workloads and applications – all at a low and predictable cost.

Visit website: <https://www.acronis.com>



### GPC Systems

GPC is an award-winning software house with over 25 years of experience working with a range of sectors across the globe. Driven by the needs of their customers in healthcare, transportation, police, logistics and local government, GPC strives to improve outcomes through the most efficient use of resources. GPC has in-depth experience creating solutions utilising 3D cameras, including the Intel® RealSense™ technology integrated into the TOUGHBOOK M1.

Visit website: <https://www.gpcsl.com/>

*All technical specifications are subject to change without notice.*

## ACCESSORY SUMMARY 1

Solution Type	Part Number	Description
Power Management	FZ-VZSU1TU	Standard 5.000 mAh Battery for Standard Model
	FZ-VZSU1UU	Long-Life 6.800 mAh Battery for Standard Model
	FZ-VZSU1VU	Long Life 6.800 mAh Battery for Quick Release SSD Model
	FZ-VCBG21*	External 4-Bay Battery Charger (from November 2021)
	CF-AA5713A2*	AC Power Supply
	CF-LND1224A	Car charger 120W (12 - 32VDC)
	CF-LND3676	Car charger 120W (22 - 32VDC), MIL-STD
Keyboard	FZ-VEKG21L*	Emissive IP65 Backlit Keyboard
Styluses	FZ-VNTG11U	Stylus Tether
	FZ-VNP026U	IP55 Digitiser Pen
Productivity Solutions	FZ-VSCG211U	Smart Card Reader
	FZ-VRFG211U	HR-RFID Reader
	FZ-VBRG211U	Barcode Reader
	FZ-VTSG211U	Thermal Camera
	FZ-VLNG211U	Gigabit LAN Port
	FZ-VUBG211U	USB 2.0 Type A Port
	FZ-VSRG211U	Native Serial Port
	PCPE-MOVBTH1	Bluetooth Headset
	PCPE-MOD10BC	Bluetooth Headset 10 Bay Charger
	PCPE-MOVBAT1	Bluetooth Headset
Protection & Security	PCPE-KENLOK1	Kensington Lock Replaceable Batteries – 25 pack
	PCPE-INFG2TG1	Tempered Glass
	PCPE-INFG2PF1	Privacy Screen
	FZ-VPF38U	LCD Protective Film
	CF-VNC002U	LCD Screen Cleaning Cloth
Carrying Solutions	FZ-VSTG21U	Rotating Hand Strap
	PCPE-INFG2H1	Rotating Hand Strap (Toughmate)
	PCPE-INFG2A0	Always On Case (Toughmate)
	PCPE-INFA3XS	Elastic X-Strap (Toughmate)
Mobile Printing Solutions	PCPE-BRPJ763	PJ763 A4 mobile printer, 300 dpi with USB & Bluetooth
	PCPE-BRPJ773	PJ773 A4 mobile printer, 300 dpi with Wi-Fi & AirPrint

All technical specifications are subject to change without notice.



## ACCESSORY SUMMARY 2

Solution Type	Part Number	Description
Desktop Docking Solutions	FZ-VEBG21U	TOUGHBOOK G2 Desktop Cradle
	FZ-VEBG11AU	TOUGHBOOK G1 Desktop Cradle (compatible with TOUGHBOOK G2)
	CF-VEB201U	TOUGHBOOK 20 Desktop Port Replicator (compatible with TOUGHBOOK G2 + Keyboard)
Vehicle Docking Solutions	PCPE-GJG1V* 01/02/05	TOUGHBOOK G1/G2 Vehicle Dock (Gamber Johnson)
	PCPE-HAVG1* 03/04	TOUGHBOOK G1/G2 Vehicle Dock (Havis)
	PCPE-GJ20V* 07/08	TOUGHBOOK 20 Vehicle Dock (Gamber Johnson) (compatible with TOUGHBOOK G2 + Keyboard)
	PCPE-HAV20* 07/08	TOUGHBOOK 20 Vehicle Dock Havis (compatible with TOUGHBOOK G2 + Keyboard)
Professional Services	PCPE-PSBIOSG	Custom BIOS Service – Gold
	PCPE-PS20GIM	Image deployment per device (MOQ 30)
	PCPE-PSSIMIN	SIM Installation
	PCPE-PSATAG1	Asset Tagging
	PCPE-PSATAGB	Information Management Bundle
	PCPE-PSAUTOP	Autopilot Enrolment
	PCPE-PSLOGOB	Custom logo badge
	PCPE-PSSPACK	Solution Packaging
	PCPE-PSCDL01	Customised Deployment / Logistics
Smart Essentials	CF-LESPSSSM3/5	Smart Service self managed licence – 3 or 5 years
	CF-LESPBAEE1/3/5	Smart Battery Monitor software licence – 1, 3 or 5 years
	CF-LESPDAEE1/3/5	Smart Device Monitor software licence – 1, 3 or 5 years
	CF-LESPSESS1/3/5	Smart Essentials Bundles – 1, 3 or 5 years
Lifecycle Support	FZ-LESPEW* 4/5	Extended Warranty
	FZ-LESPAD* 3/4/5	Accidental Damage Warranty
	CF-LESPBASS* 3/4/5	Smart Battery Warranty

Panasonic and Toughbook are brand names and registered trademarks of Panasonic Corporation. Intel, the Intel logo, Intel Core, Intel vPro, Core Inside and vPro Inside are trademarks of Intel Corporation in the U.S. and other countries. Microsoft® and Windows® are registered trademarks of Microsoft Corporation of the United States and/or other countries. All rights reserved. All other brand names shown are the registered trademarks of the relevant companies.